

Měření pro Telekomunikace / IT a instalace.



**KURTH  
ELECTRONIC**

PROSPEKT 2015 / 16



Made in Germany

## Lokátory kabelů v instalacích



Komplet induktivní sondy a tónového generátoru rychle a snadno umožní vyhledat poruchy vodičů, rozpoznat páry, rozdělení párů, lokalizuje přerušené vodiče/páry ve stěnách, nebo neoznačených svazcích. Urychluje pokládky a údržbu na všech typech vodičů a kabelů, včetně telekomunikačních a sdělovacích, datových, instalačních silových rozvodů v budovách

### Na první pohled

- Vhodné pro telefonní kabely, zvonkových dráty, datové kabely, koaxiální kabel a napájecí kabely
- Použití ve svazcích, lištách, vnitřních stěnách, rozvodech atd.
- Chráněno až do 500 V (v závislosti na modelu)
- Akustická a vizuální indikace signálu a čtyři frekvence vyhledávání
- Přijímač s červenou indikací signálu ISDN (v závislosti na modelu)
- Zdroj signálu na aktivních telefonních a datových linkách
- Přijímací sonda se světlem LED
- Vhodné pro instalace, staveniště, stejně tak v průmyslových prostředích



Srovnávací tabulka lokátorů	KE301 Classic	KE401 IT	KE501 Elektro	KE701 Telco	KE801 Optika & měď	KE2093 Trasovač
Ideálně se hodí pro:	POTS	Telekomunikace	Instalace	Telekomunikace	Telko / Optika	Electric
Zvýšená přepětová ochrana 500 V	-	-	■	■	■	300 V
Indikace napětí na displeji / polarity pomocí LED diody	■ / ■	■ / ■	■ / ■	■ / ■	■ / ■	-
Test kontinuity / test odporu	■ / ■ LED	■ / ■ LED	■ / ■ LED	■ / ■ + Tone	■ / ■ + Tone	-
RJ45 s funkcí Dataport-Finder (Link-Blink)	-	■	-	■	■	-
Vvizualizace poruchy (optika)	-	-	-	-	■	-
Lokalizace kabelů pod napětím do 300V	-	-	-	-	-	■
Izolované měřící vodiče CAT II / III 300 V	-	-	■	-	-	■
Přijímací sonda detekuje aktivní signály ISDN BRI	-	■	-	■	■	-
Kvalita - Vyrobeno v Německu	■	■	■	■	■	EU
Katalogové číslo	0.49562	0.49563	0.49564	0.49567	0.49568	0.49570

■ standard – není k dispozici

### Príslušenství

6/8-pólový adaptér pro zdíčky telefonu, data, ISDN a na ostatních sítích s 4- / 8-pin strukturovanými konektory (RJ11 - RJ45), bez rozpojení spojovacích krabic nebo zařízení.

Sluchátka pro přijímač Dokonalým doplňkem pro hlasité prostředí. EarSet lze snadno připojit na zadní straně pro modely sond 310, 410 a 510.

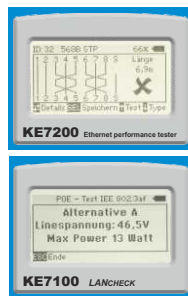
Optický adaptér pro KE800 / KE850 / KE8000 / KE8100 / KE8200

Barcode	Popis
0.49700	Adaptér
0.49600	Sluchátka
14000070	Optický adaptér 2.5 to 1.25 mm
14000078	Optický adaptér 2.5 mm

# LAN a Ethernet Testery



Šikovný a odolný tester sítí KE7200 a KE7100 s jejich vynikajícím poměrem cena / výkon jsou vaše ideální nástroje pro instalace testy a řešení problémů v malých a velkých LAN a telekomunikačních sítích, počínaje jednoho páru drátů. KE7200 poskytuje další aktivní testy sítí a vytváření zákaznických měřících protokolů.



Ill. shows KE6301

## Basic Test Set

Allows detecting and identifying the line and gives a review of network and telecommunications cabling. Set consisting of **Cable Finder Kit** and **two KE6000**, including batteries, in durable plastic case.

### Your benefit

- Fast wiring inspection
- Only requires one technician to check
- Ideal for new constructions and repair
- With a Cable Finder Kit KE301 - KE801

## Comparison sheet LAN & Ethernet Tester

		KE7200 Ethernet Tester	KE7100 LANcheck
	Checks the wiring with PIN and pair assignment (wire map) starting from one pair	■	■
	Measurement of line length and distance to fault up to 150 meters (TDR function)	■	■
	16 predefined profiles of wiring and cable types, custom profiles are editable in the unit	■	■
	Detecting split pair errors	■	■
	PoE test with display of the available power (IEEE802.3af and IEEE802.3at)	■	■
	Port identification with Link-Blink Function and sending search tones (with optical PROBE)	■	■
	Up to 32 active remote units configurable / supplied quantity	■ / 2	■ / 1
	Active Network Test with static IP or DHCP as well as 10/100/1000 MBit/s detection	■	–
	Network scan with a list of participants with their name, IP and MAC address	■	–
	Ping of individual addresses, PING with packet loss indication / response times for stress test	■	–
	Stores cable tests and network information and allows individual measurement protocols	■	–
	Optional: Bridge Tap detection for 2-wire lines (4 - 5)	□	–
	Article number	0.49420	0.49410

■ standard □ optional available – not available

## Network Cable Tester

The handy **KE6000** helps you quickly and easily during testing of patch cables, LAN and telecommunications cabling.

### At a glance

- Tests Ethernet connections, T568A/B
- Clear display shows status of the cable
- Checks for continuity / short / open / reversal / screen / multiple errors
- Error display on both sides saves time
- For cable test 2 x **KE6000** are required

No.	Type	Description
0.49400	KE6000	LAN cable tester with digital LCD display
0.49450	KE6001	2 x KE6000 with batteries in hardplastic case



## Remote Unit - max. 32 pieces

**KE7010 Remote unit** for KE7100 and KE7200.

- Info LED shows OK / not OK
- Remote number individual programmable

No.	Type	Description
0.49415	KE7010	Remote Unit, remote number individual programmable
0.49416	KE7010 Kit	4 Remote Units, pouch



## Power over Ethernet Tester

Displays supply voltage and which version (IEEE802.3af).

- Fast display of the supply variant
- Lightweight, compact and inexpensive

No.	Type	Description
0.49460	POEcheck	Power over Ethernet Tester with test leads and RJ45 jack



Ill. shows KE7107

## Network Test Sets

**KE7107 and KE7108** consisting of network tester and cable finder kit: the ideal set for working in telephone and data networks. Offers time and cost savings and ease of installation and troubleshooting.

### Your benefit

- KE7100: Ethernet wiring tester, PoE powertest as well as editable cable profiles in the unit
- KE701/KE801 for cable and line tracing
- KE801: Optical continuity tester with modulated laser light source for fiberoptic lines

No.	Type	Description
0.49451-7	KE7107	KE7100 LANcheck, 1 x KE7010, KE701 Telco, test leads, batteries, plastic case
0.49451-8	KE7108	KE7100 LANcheck, 1 x KE7010, KE801 Fiber, test leads, batteries, plastic case



Ill. shows KE7208

## Professional Test Sets

The professional sets **KE7207 and KE7208** or installation and troubleshooting with the ability to create individual test reports. The perfect and complete toolbox solution for efficient work in active and passive networks.

### Your benefit

- KE7200: Ethernet wiring tester, PoE powertest, editable cable profiles in the unit, IP Tests and printing of test records
- KE701/KE801 for cable and line tracing
- KE801: Optical continuity tester with modulated laser light source for fiberoptic lines

No.	Type	Description
0.49452-7	KE7207	KE7200, 2 x KE7010, KE701 Telco, software, test leads, batteries, plastic case
0.49452-8	KE7208	KE7200, 2 x KE7010, KE801 Fiber & Copper, SW, test leads, batt., plastic case

# Ethernet Performance Tester



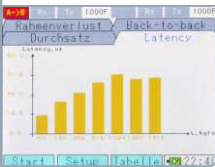
## Gigabit Dual-Port Tester for Copper and Fiber

**KE7500 GIGATEST** is an easy-to-use and cost-effective test solution for Carrier Ethernet Services and for Ethernet Network installation. The dual-port 10/100/1000 Mbit/s for copper and fiberoptic networks allows cable tests at the physical layer and traffic analysis at layer 2 and 3 including RFC2544 tests and Y.1564-service testing. Optional SFP modules supports measurements of the KE7500 in Gigabit Ethernet Networks.

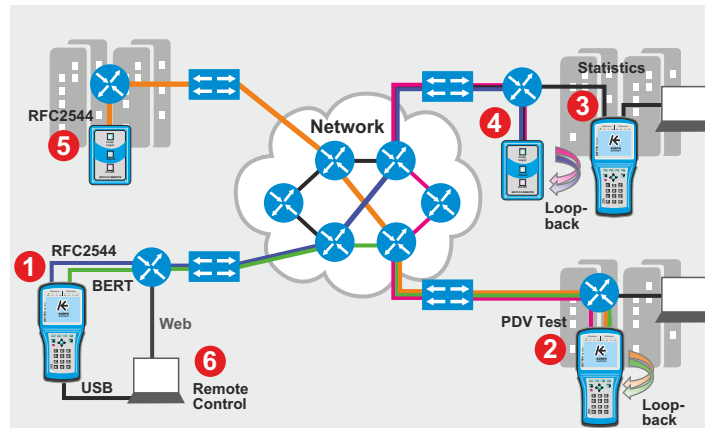
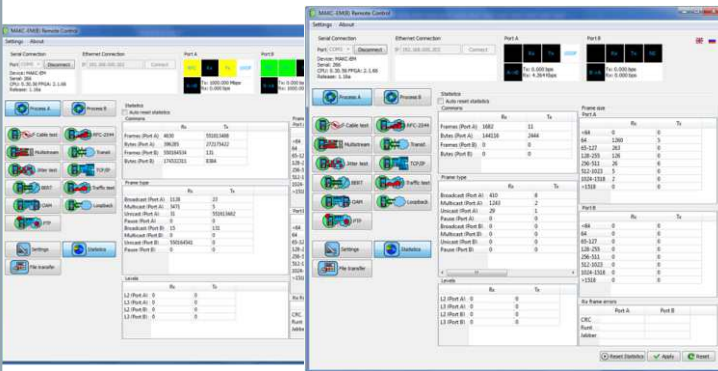


### At a glance

- Dual Port 10/100/1000 Mbit/s Copper- and Fiber interface for Carrier Ethernet Services
- Quick testing of the cabling
- RFC2544 performance testing
- Ethernet Service Activation Methodology (SAM) tests Y.1564
- Up to 10 configurable Multistreams
- Supporting MPLS, OAM and ARP
- Layer 1 - 4 loopback function
- End-to-end analysis
- Optical power measurement (GbE-SFP)
- Media converter
- Documentation with PC software



No.	Type	Description
0.49430	<b>KE7500</b>	Ethernet carrier tester, software, pouch
0.49430-10	<b>KE7500 SAM</b>	SAM test Y.1564 (software option)
0.49430-11	<b>KE7500 MS</b>	Simultane multistream measurements (software option)
0.49430-12	<b>KE7500 MPLS</b>	MPLS support and configuration (software option)
0.49430-13	<b>KE7500 PTP</b>	Synchronization testing PTP IEEE1588 (software option)
0.49430-14	<b>KE7500 RC</b>	Remote control via Ethernet (software option)



- 1 KE7500 in 2 channels testing mode and loopback at the far end
- 2 KE7500 with multistream test load generation and packet delay variation (IEEE1588)
- 3 KE7500 in statistics collection and user traffic parameters checkout mode
- 4 KE7500 Loopback Remote in loopback mode
- 5 KE7500 Loopback Remote in test traffic generation mode as an active load test data generator
- 6 Remote control of the tool via USB interface and control other KE7500 via Ethernet Management Port

## GIGATEST Remote



**KE7510 Loopback Remote** is the ideal tool for the maintenance of copper and fiber Ethernet networks up to 1 Gbit/s.

### At a glance

- Basic loopback unit
- Supports: OAM, ARP, DHCP, MPLS
- Optional analysis test software
- For universal use

No.	Type	Description
0.49435	<b>KE7510</b>	KE7510 Remote for loopback
0.49435-10	<b>KE7510 AT</b>	Analysis tool end-to-end mode with KE7500

# Fiber Optic Testing

## Optical Power Meter and Light Sources

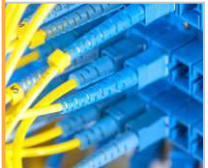


**KE8000 - KE8200** are inexpensive and easy-to-use optical power meter and light sources in pocket format for attenuation measurement during installation and maintenance of optical single- and multimode networks.



### At a glance

- High-quality, calibrated light sources
- Attenuation measurement from 800 - 1700 nm
- Large result display on backlight LCD
- For mono- and multi-mode fibers
- Variable measuring adapter system



No.	Type	Description
0.49110	<b>KE8000</b>	Optical Power Meter 800 - 1700 nm, batteries, pouch
0.49120	<b>KE8100</b>	Optical Light Source MMF, 850 / 1300 nm, batteries, pouch
0.49130	<b>KE8200</b>	Optical Light Source SMF, 1310 / 1490 / 1550 nm, batteries, pouch

## Visual Fault Locator



The compact red laser light source **KE850 EasyPoint** fits daily use in all fiber-optic networks.

### At a glance

- For optical LAN and telecom networks
- Displays breakage, passage and allows detection
- Continuous wave and pulse mode
- Universal port with ceramic ferrule

No.	Type	Description
0.49100	<b>KE850 EasyPoint</b>	Visual fault locator, 1 mW, 650 nm, in case with batteries

## Optical Test Set



Ill. shows KE8083

The optical test sets **KE8001 - KE8083** are practical measurement sets with or without VFL, stored in a hard plastic case for complete, quick and easy attenuation measurements during installation, maintenance and troubleshooting.

### Your benefit

- Easy-to-use test equipment, rugged and handy
- For mono- and multi-mode fibers

No.	Type	Description
0.49125	<b>KE8001</b>	MM Set: KE8000 and KE8100 in plastic case, batteries
0.49125-8	<b>KE8081</b>	MM Set: KE8000, KE8100 and VFL KE850 in plastic case, batteries
0.49135	<b>KE8002</b>	SM Set: KE8000 and KE8200 in plastic case, batteries
0.49135-8	<b>KE8082</b>	SM Set: KE8000, KE8200 and VFL KE850 in plastic case, batteries
0.49150	<b>KE8003</b>	MM- and SM Set: KE8000, KE8100 and KE8200 in plastic case, batteries
0.49150-8	<b>KE8083</b>	MM- and SM Set: KE8000, KE8100, KE8200 and KE850 in plastic case, batteries

# Broadband Multimedia Tester and xDSL Tester



## The "all-in-one" Solution: VDSL-Vectoring, Bonding, Telephonie, Copper & Fiber

The **KE3600 xDSL MULTITEST** is your versatile and revolutionary xDSL tester for DSL services in ADSL 1/2/2 + / VDSL2 (vectoring), in bundled networks and in FTTH deployments like GPON and Dark Fiber). With its interfaces the KE3600 tester supports all current and future broadband network technologies and allows with its ease of use and the performing of multitasking tests a fast, easy and comprehensive diagnosis. His modern hardware and software design enables quick adaptation to emerging technologies such as the broadband accelerator G.fast.

No.	Type	Description
0.49830	<b>KE3600</b>	xDSL Multitester, 1 GbE interface, ADSL 1/2/ 2+
0.49830-10	<b>VDSL</b>	Upgrade Firmware VDSL2 Annex A, B (Vectoring ITU-T G.993.5)
0.49830-12	<b>KECT</b>	xDSL line qualification up to 30 MHz, DMM, remote control functions KE905
0.49830-11	<b>TDR</b>	TDR up to 6 km
0.49830-25	<b>ISDN</b>	ISDN BRI S <sub>0</sub> -TE, U <sub>0</sub> (4B3T or 2B1Q) and POTS interface
0.49830-5	<b>VoIP</b>	VoIP test (Terminal Simulation) Jitter, MOS, Speakerphone, etc.
0.49830-6	<b>IPTV</b>	IPTV test (Set Top Box Emulation) Jitter, MOS, Preview, etc.
0.49830-3	<b>SFP-Port</b>	For SFP-Copper or SFP-Fiber transceiver
0.49830-7B	<b>Bonding</b>	DSL-Bonding module, Profile 8a/b/c/d, 12a/b, 17a, 30a
0.49830-26	<b>SHDSL</b>	SHDSL 2- to 8-wire interface
0.49830-27	<b>S2M</b>	ISDN S2M Primary-Multiplex interface

## Comparison sheet xDSL Tester



**KE3600  
MULTITEST**



**KE3500  
MULTITEST**

	ADSL-ADSL2+, Annex A/B/J/L/M	■	■
	VDSL2 incl. vectoring (ITU-TG993.5), profiles 8a/b/c/d, 12 a/b, 17a	□	■
	GbE-Port for HTTP and FTP Up/Downloadtests up to 700 MBit/s	■	■
	Multi-tasking tests (same time multiple tests without synchronization loss)	■	■
	Triple Play Test: VoIP (terminal simulation) and IPTV (Set Top Box emulation)	□	□
	ISDN BRI S <sub>0</sub> -TE, U <sub>0</sub> (4B3T or 2B1Q) and POTS interface	□	□
	Coppertests (Digitalmultimeter and xDSL qualifying up to 30 MHz)	□	□
	TDR measurements (fault location and length measurement)	□	□
	SFP Gigabit- (fiber or copper) or GPON-SFP(ONT emulation)	□	—
	xDSL Bonding (ITU-T G.998.1/2/3 Bonding, bandplan 30)	□	—
	SHDSL (2- to 8-wire interface)	□	—
	ISDN S2M Primary-Multiplex interface	□	—
	G.fast over module upgrade	□	—
	Future-proof due to new hardware and software design	■	—
	Rugged, water-resistant housing with protective case	■	■
	High-performance LiPo battery for extended field-use	■	■
	In the sunlight-readable 3,5" TFT color display	■	■
	PC software for measurement protocols and device management	■	■
	Article number	0.49830	0.49810

■ standard □ optional available — not available



## Full access to VDSL2-Vectoring and Triple Play Tests

The **KE3500 xDSL MULTITEST** offers beside tests in ADSL1/2/2 + and VDSL2 full tests in Vectoring environments. Other functions such as ISDN and POTS Speakerphone, Triple Play tests as well as extensive copper tests to 30 MHz make it the universal working tool for installers and service technicians. The innovative operation allows you to perform and edit tests simultaneously without loss of synchronization. Great Deal!!



**funkschau ITK product 2014:**  
Our **KE3500 xDSL MULTITEST** is the winner!

No.	Type	Description
0.49810	<b>KE3500</b>	xDSL Multitester, 1 GbE interface, ADSL1/2/ 2+ and <b>VDSL2 Vectoring</b>
0.49830-12	<b>KECT</b>	Coppertest: Linie qualification up to 30 MHz, DMM, remote control functions
0.49830-11	<b>TDR</b>	TDR up to 6 km
0.49810-25	<b>ISDN</b>	ISDN BRI S <sub>0</sub> -TE, U <sub>0</sub> (4B3T or 2B1Q) and POTS interface
0.49830-5	<b>VoIP</b>	VoIP Test (Terminal Simulation) Jitter, MOS, Speakerphone, etc.
0.49830-6	<b>IPTV</b>	IPTV Test (Set Top Box Emulation) Jitter, MOS, Preview, etc.

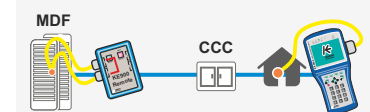
## Electronic Remote Line Switching



The **KE901 Loop Test Assistant** for remote switching reduces the cost of traveling from the customer returning to the office or the distribution to make changes. This will save your time and thus labor costs. The customer line remains in service while driving. There is no influencing of the lines up to 30 MHz.

### At a glance

- Turn of bridges and switching lines from the distance
- 3 pairs of wires or instruments can be connected
- Customers line remains in service until the measurement starts
- Remote switching up to 12 km, acknowledged acoustically and visually
- Supports and works with any tester - regardless of the manufact
- **KE905 Remote:** Direct control commands from KE2500/KE2800 and the xDSL Tester with KECT coppertest interface

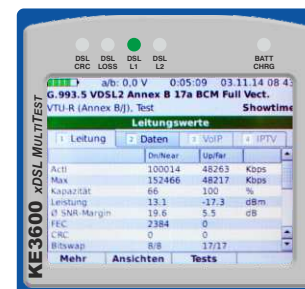


**Cut through:** Customers line remains in service up to the start of the measurement  
**Open:** Measuring Noise, Voltage, Capacity, Insulation, etc.

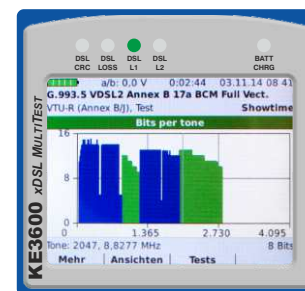


**Master-Slave measurement:** Can be used to measure the attenuation with an additional signal transmitter so Port 1 is connected to Port 3

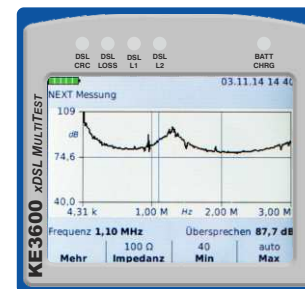
No.	Type	Description
0.49620	<b>KE901</b>	Set from KE905 Remote / KE910 Controller, test leads, pouch
0.49620-10	<b>KE905</b>	KE905 Remote for KECT, KE2500 and KE2800



■ DSL parameters at a glance



■ Bits per Tone, Hlog, QLN and SNR per tone graphics



■ Line Qualification with KECT, e.g. NEXT measurement

## Line Qualification



### Telco Multimeter

The **KE2500 Telco Multimeter** is specifically designed for telephone 2-wire lines and allows a detailed error analysis and a complete overview of the physical state of the circuit under test.



#### At a glance

- Measures symmetry, resistance, capacitance
- Loop analysis: automated test sequences simplify and speed up measurements
- TRMS, AC/DC current and voltage
- Insulation measurement with 8 V or 100 V
- Direct control commands for optional KE905 Remote unit for remote switching
- Analysis of signature + PPA (Telekom)
- Transfer of stored data via USB port

No.	Type	Description
0.49250	KE2500	Telco Multimeter, test leads, pouch

Made in Germany

### Telco Line Qualification

**KE2800 Telco Loop Qualifier** for telecommunications applications up to 30 MHz. Helps with the fault analysis in the DC and AC field with digital multimeter function especially designed for telephone 2-wire lines and TDR features a precise fault detection and localisation.



#### At a glance

- With ADSL and VDSL Filter
- Impedanz, Return loss, Balance, NEXT measurement, Receive level, Spectrum, Wideband Noise and Impulse Noise
- Symmetry, Resistance, Capacitance
- Loop analysis: automated test sequences simplify and speed up measurements
- TRMS, AC/DC current and voltage
- Insulation measurement with 8 V or 100 V
- TDR shows and locates cable faults
- Storage of measurement data, USB transfer
- Direct control commands for optional KE905 Remote unit for remote switching

No.	Type	Description
0.49280	KE2800	Telco Loop Qualifier, test leads, pouch

Made in Germany

## Cable Fault Meters, Test Telephone, Buried Cable Path Locator



### TDR

The **KE-TDR06** locates the presence of cable faults, including shorts, opens, taps, splices, water ingress, etc. on copper communication cables up to distance of 6000 m.

#### At a glance

- For telecom, video, data and security systems
- Easy-to-use and robust housing
- Clear presentation on the LCD graphic display

No.	Type	Description
04403400	KE-TDR06	TDR length measurement from 0,5 - 6.000 m, test leads, pouch



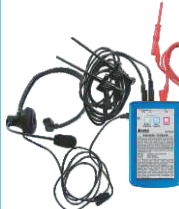
Ill. shows TalkSet

### Cable Conductor Test Sets

The more actual expectant problem today is the risky use of mobile phones or handheld radios during the installation and maintenance of sensitive equipment. The **TalkSet** provides you simple test jobs on analogue Fed lines, PBXs, etc.

#### At a glance

- Indispensable for commissioning and troubleshooting on analog lines
- Non disturbing in-house-communication
- Up to 10 km distance depending on cable



Ill. shows CCTS-03

The **CCTS-03** quickly and easily checks the individual wires for continuity, exchange, contact and earth fault. The voice communication on free lines guarantees time and cost savings. There is always a voice connection between the technicians.

#### At a glance

- Indispensable for setup, fault tracking, and maintenance
- Microprocessor for tuning on life lines
- Useful also on powered telecom lines
- Line resistance up to 2000 Ohm

No.	Type	Description
0.49610	TalkSet	2 x headphone / headset with analog 2-wire phone connection, pouch
0.49617	CCTS-03	Cable conductor test set for live wires, headset, pouch

Made in Germany



### ISDN-P-MP-Tester

The **ICHECKplus** is used to check the basic functions and ISDN installation for wiring- and application faults.

#### At a glance

- Indication of ISDN-activity via LEDs
- No battery voltage necessary

No.	Type	Description
0.49801	ICHECKplus	ISDN installation tester and activity monitor

Made in Germany



### Analog Test Telephone

The handy and rugged, waterproof **TP09D** analog test set offers many features in spite of simple operation.

#### At a glance

- Voltage, current and polarity display
- Direct flash button / pulse and tone dialing
- Monitor for active and passive line
- Shows calling number (CID) and MWI
- DTMF processing in monitor mode

No.	Type	Description
0.49310	TP09D	Analog test telephone with display, long test leads and pouch

Made in Germany



Ill. shows Stick PLS



Ill. shows 8879 PLS

### Buried Cable Path Locator

You benefit with the buried cable and pipe locators **Stick PLS** and **PLS 8879** by its sophisticated and compact design and its high-quality technology. Specially developed for use in the field, these devices comply with the localization of cables, pipes and metallic conductors your highest expectations.

#### At a glance

- Locates pipes, cables, water and gas lines
- Push button digital depth up to 4 m
- Multiple frequencies options available
- Manual gain control for locating accuracy
- LCD bar graph on both transmitter and receiver
- Transmits up to 5 Watts
- Simple application
- Wide range of accessories available

No.	Type	Description
001-00482	Stick PLS	Dig. Buried Cable Path Locator, 3 Watt, test leads, pouch
001-00321	8879 PLS	Dig. Buried Cable Path Locator, 5 Watt, accu, leads, pouch

Your Dealer



www.kurthelectronic.de